

I. Introduction

The Proposal for the Greater Los Angeles County Region provides an effective schedule for the State to realize the benefits from implementation of the various projects. In particular:



- One of the projects will start construction before the anticipated grant award date of June 1, 2011.
- Several projects will start construction before December 31, 2011 and eight of the projects will start construction within a year of the anticipated grant award.
- Nearly all projects in the Proposal will be complete or implemented by the end of 2013, allowing the State and the local communities to begin realizing the benefits of this Proposal quickly.

A summary schedule for the entire Proposal is provided in Table 5.1, which identifies the proposed construction start date for each project. Detailed schedules for each project follow this introduction.

The categories in the individual project schedules are consistent with those presented in the Work Plan (Attachment 3) and the Budgets (Attachment 4). Based on review of the Work Plans, the detailed projects budgets, and individual project schedules (included in this attachment) the schedule for the Proposal seems reasonable.

Table 5.1: Roll-Up of Project Schedules

#	Project	2010	2011	2012	2013	2014	Project Construction Start Date
1	Hahamongna Basin Multi-Use Project	[Gantt bar showing Planning/Design/Solicitation from early 2010 to mid-2012, and Construction Phase from mid-2012 to early 2014]					Apr 2013
2	Citywide Smart Irrigation Control System and Recycled Water Improvements	[Gantt bar showing Planning/Design/Solicitation from early 2010 to mid-2011, and Construction Phase from mid-2011 to early 2012]					Aug 2011
3	Storm Drain Improvements and Installation of Infiltration Chambers on Hawthorne Blvd	[Gantt bar showing Planning/Design/Solicitation from early 2010 to mid-2012, and Construction Phase from mid-2012 to early 2014]					Jun 2013
4	Fenmar Water Quality and Runoff Reuse	[Gantt bar showing Planning/Design/Solicitation from early 2010 to mid-2011, and Construction Phase from mid-2011 to early 2013]					Jan 2011
5	Model Equestrian Center	[Gantt bar showing Planning/Design/Solicitation from early 2010 to mid-2011, and Construction Phase from mid-2011 to early 2012]					Oct 2011
6	16th St. Watershed Runoff Use Project	[Gantt bar showing Planning/Design/Solicitation from early 2010 to mid-2012, and Construction Phase from mid-2012 to early 2014]					Aug 2013
7	Surface Water Treatment Plant Improvements	[Gantt bar showing Planning/Design/Solicitation from early 2010 to mid-2011, and Construction Phase from mid-2011 to early 2012]					Feb 2012
8	Central LA County Regional Water Recycling Program	[Gantt bar showing Planning/Design/Solicitation from early 2010 to mid-2011, and Construction Phase from mid-2011 to early 2013]					Nov 2011
9	Tujunga Spreading Grounds Enhancements Project	[Gantt bar showing Planning/Design/Solicitation from early 2010 to mid-2011, and Construction Phase from mid-2011 to early 2012]					Feb 2012
10	San Antonio Spreading Grounds Improvements	[Gantt bar showing Planning/Design/Solicitation from early 2010 to mid-2011, and Construction Phase from mid-2011 to early 2012]					Oct 2011
11	Leo J. Vander Lans Advanced Water Treatment Plant Expansion	[Gantt bar showing Planning/Design/Solicitation from early 2010 to mid-2011, and Construction Phase from mid-2011 to early 2013]					Mar 2012
12	Whittier Narrows Conservation Pool Project	[Gantt bar showing Planning/Design/Solicitation from early 2010 to early 2014]					n/a
13	Water and Energy efficiency in the Schools and Hotel/Motel Sectors	[Gantt bar showing Planning/Design/Solicitation from early 2010 to mid-2011, and Construction Phase from mid-2011 to early 2013]					Dec 2011

Legend  Planning/Design/Solicitation  Construction Phase

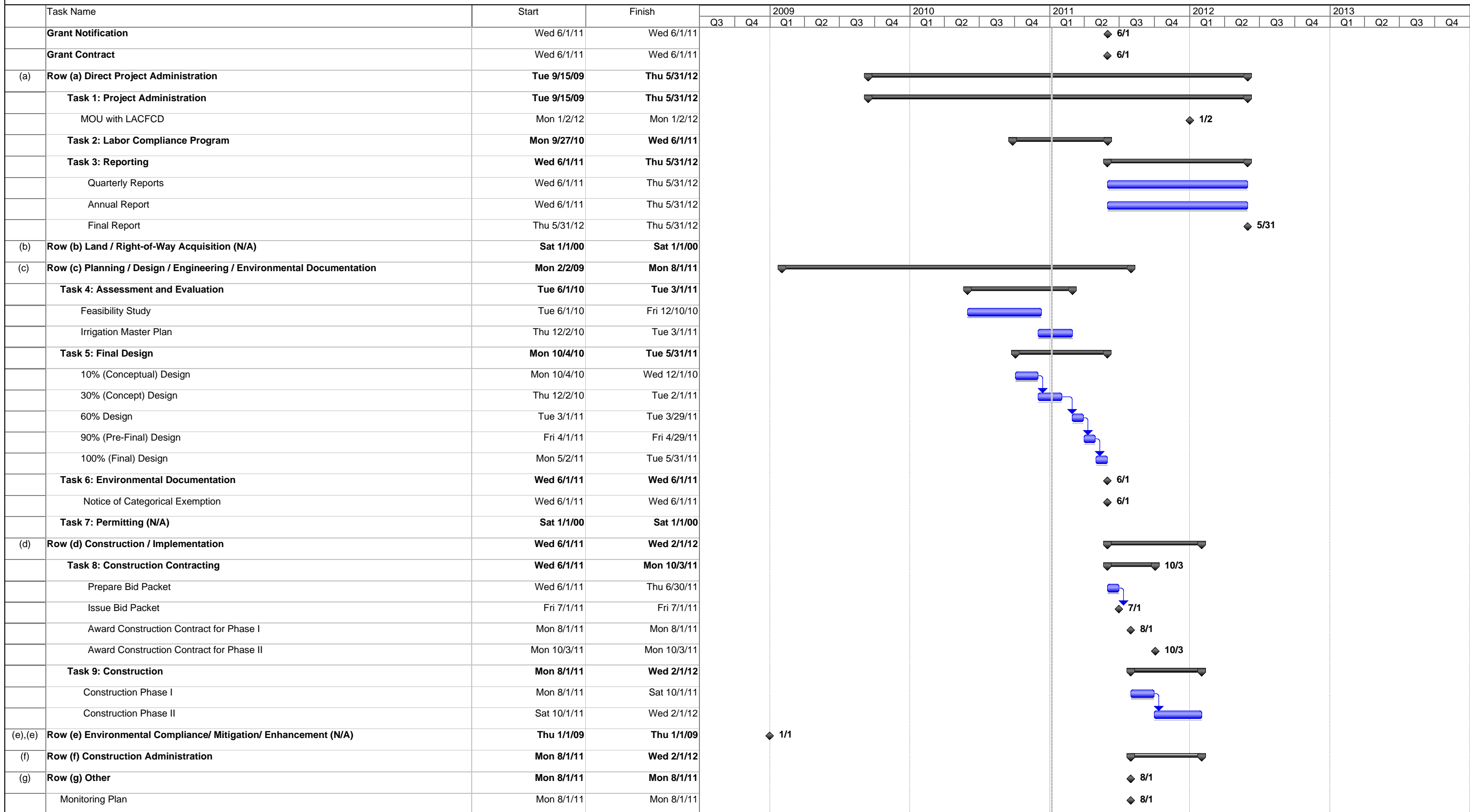
Readiness to Proceed

Table 5.2 identifies important milestones for each project, demonstrating the project’s readiness to proceed, including land/right-of-way acquisition, planning (includes assessments and evaluations), design/engineering, environmental documentation, permit acquisition, and bid solicitation. The table demonstrates also identifies pre-construction work items that have been completed or are expected to be completed by June 1, 2011, the anticipated award date.

Table 5.2: Status of Project Pre-Construction Work Items

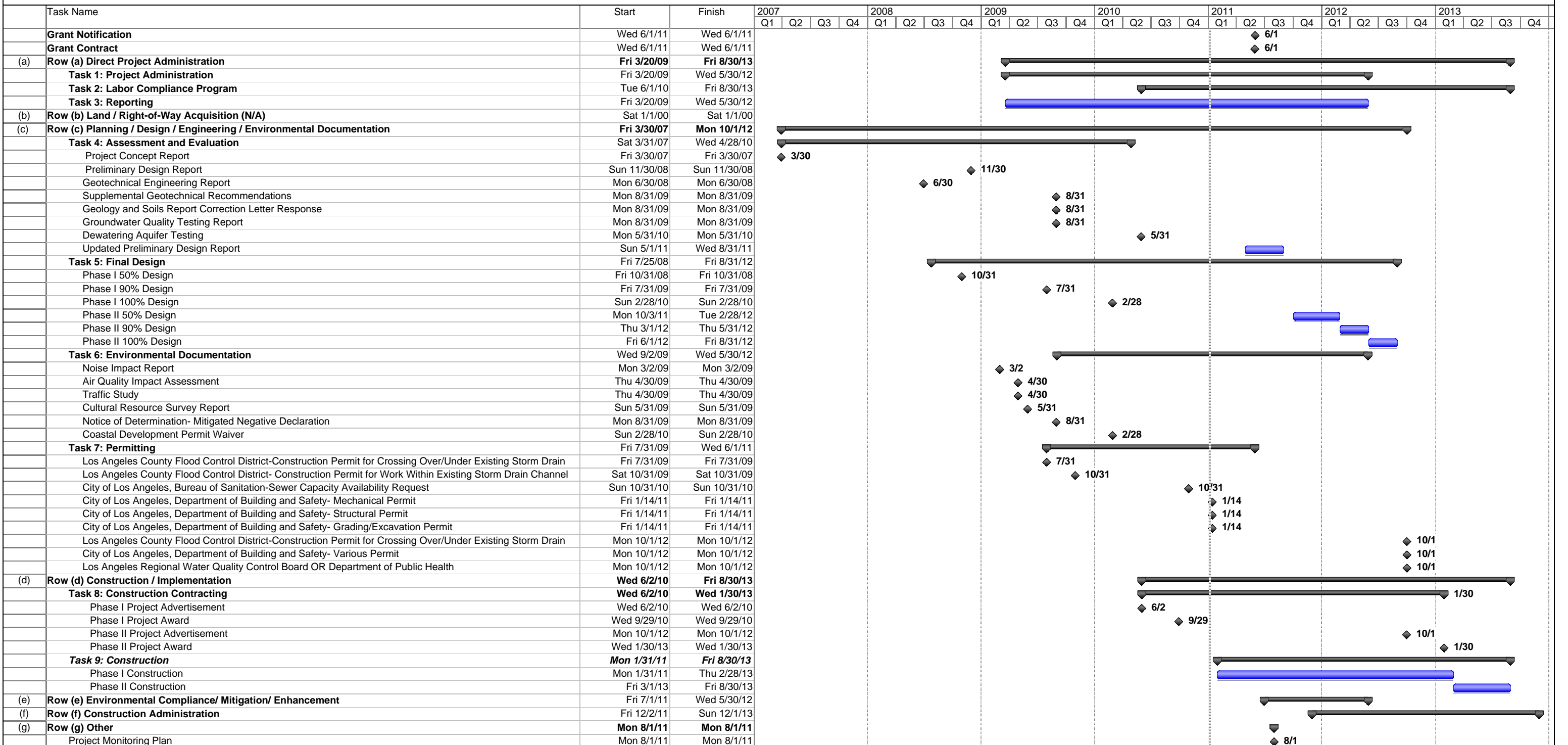
#	Project	Land Purchase/ Easement	Planning	Design/ Engineering	Environmental Documentation	Permit Acquisition	Bid Solicitation
1	Hahamongna Basin Multi-Use Project	Complete	Sep 2012	Apr 2013	Jan 2013	Jun 2013	Sep 2013
2	Citywide Smart Irrigation Control System and Recycled Water Improvements	Complete	May 2011	May 2011	Jun 2011	Complete	Aug 2011
3	Storm Drain Improvements and Installation of Infiltration Chambers on Hawthorne Blvd	Complete	Complete	Jun 2012	Jan 2012	May 2013	Jun 2013
4	Penmar Water Quality and Runoff Reuse	Complete	Aug 2011	Aug 2012	Complete	Oct 2012	Jan 2013
5	Model Equestrian Center	Complete	Oct 2010	Nov 2011	Aug 2011	Dec 2011	Jan 2012
6	16th St. Watershed Runoff Use Project	Mar 2013	Complete	Aug 2012	Complete	Mar 2013	Aug 2013
7	Surface Water Treatment Plant Improvements	Complete	Complete	Complete	Sep 2011	Jun 2013	Dec 2011
8	Central LA County Regional Water Recycling Program	Complete	Jun 2012	Nov 2011	Complete	Mar 2012	May 2012
9	Tujunga Spreading Grounds Enhancements Project	Complete	Complete	Jul 2011	Jul 2011	Jun 2012	Dec 2011
10	San Antonio Spreading Grounds Improvements	Complete	Complete	Aug 2011	Complete	Complete	Oct 2011
11	Leo J. Vander Lans Advanced Water Treatment Plant Expansion	Complete	Complete	Dec 2011	Aug 2011	Mar 2012	Mar 2012
12	Whittier Narrows Conservation Pool Project	Complete	Dec 2013	Aug 2014	Dec 2013	Aug 2014	Aug 2014
13	Water and Energy efficiency in the Schools and Hotel/Motel Sectors	Complete	Dec 2010	Complete	Complete	Complete	Dec 2011

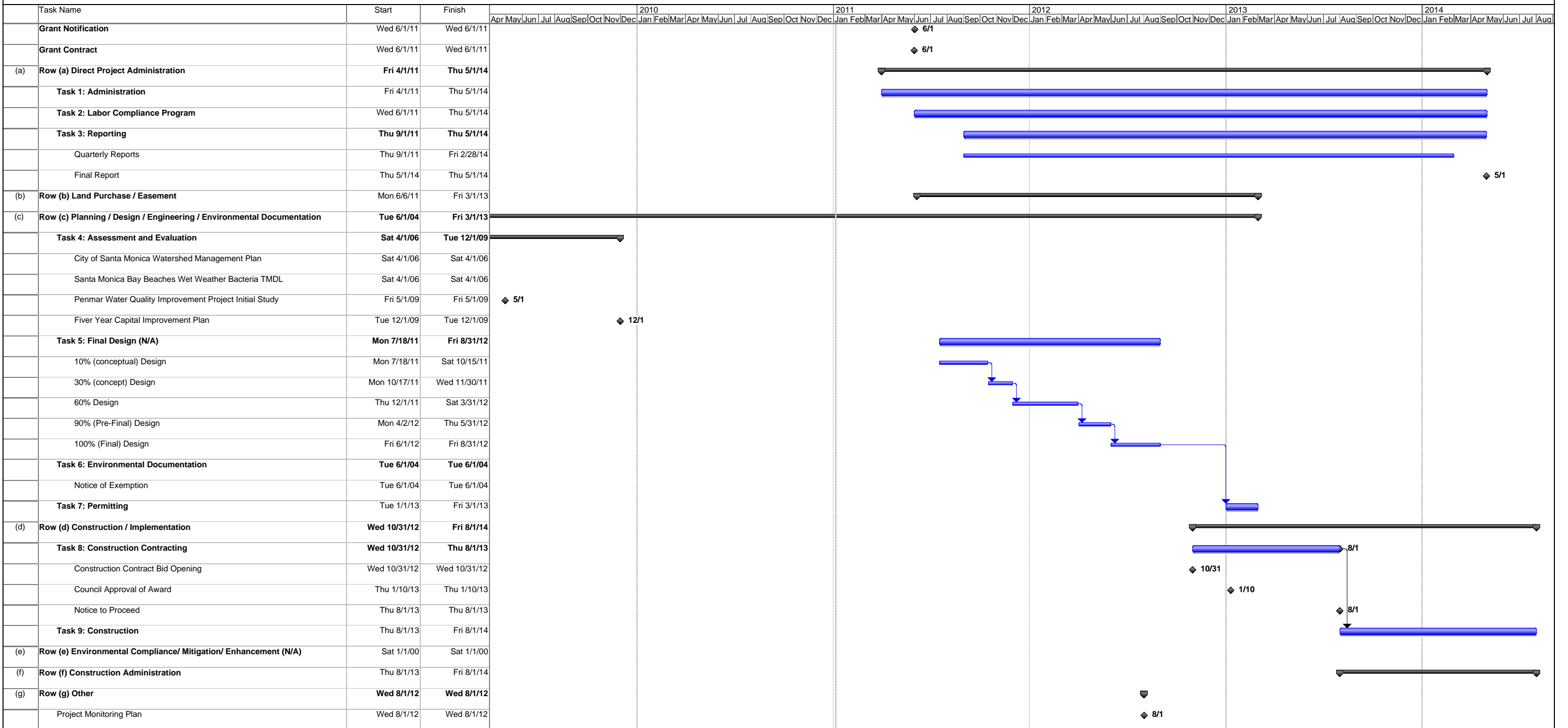
Pre-construction work item complete as of June 30, 2010
Pre-construction work item will be complete by June 1, 2011
Pre-construction work item will be complete after June 1, 2011

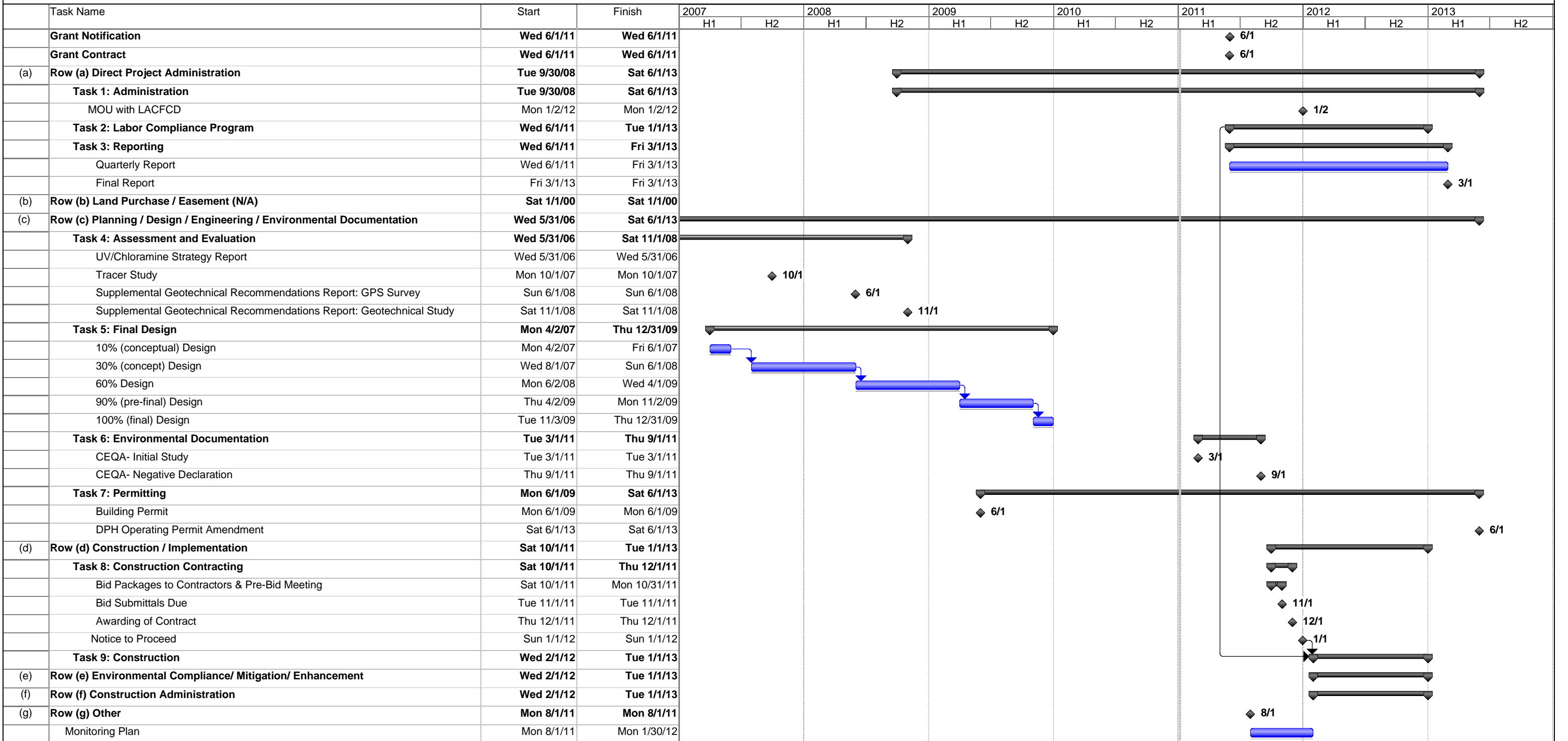


Project: Citywide Smart Irrigation Cont
Date: January 2011

Task Progress Summary External Tasks Deadline Milestone Project Summary External Milestone

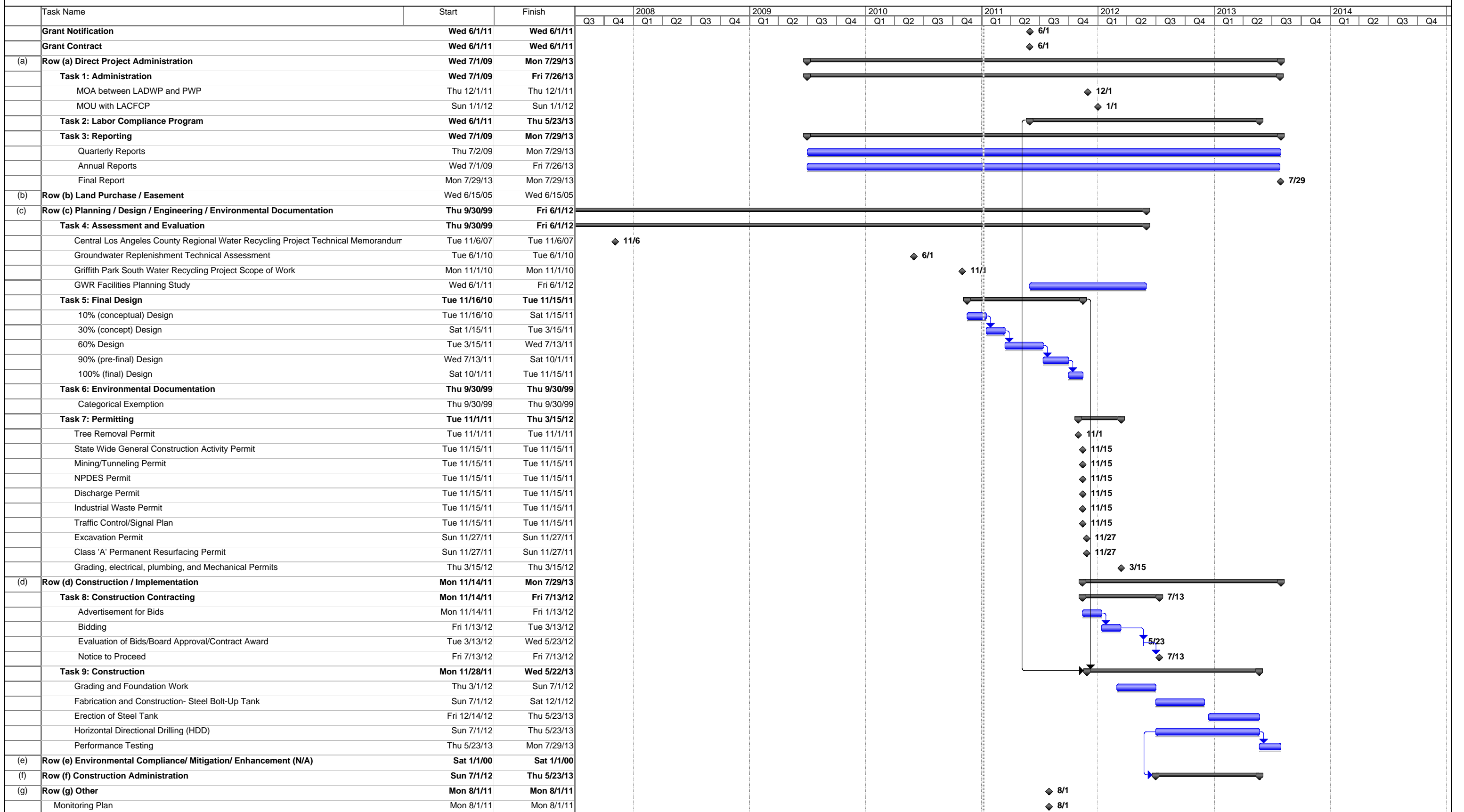






Project: Surface Water Treatment Plant Improvements
Date: January 2011





Project: Central Los Angeles County- Regional Water Recycling Program
Date: January 2011

Legend:
 Task: [Blue Bar] Progress [Grey Bar] Summary [Black Bar] External Tasks [Grey Bar] Deadline
 Split: [Dotted Bar] Milestone [Diamond] Project Summary [Arrow] External Milestone

Task Name	Start	Finish	2012												2013												2014
			May	Jun	Jul	Aug	Sep	Oct	Nov	Dec	Jan	Feb	Mar	Apr	May	Jun	Jul	Aug	Sep	Oct	Nov	Dec	Jan				
Grant Notification	Wed 6/1/11	Wed 6/1/11	◆ 6/1																								
Grant Contract	Wed 6/1/11	Wed 6/1/11	◆ 6/1																								
(a) Row (a) Direct Project Administration	Wed 6/1/11	Tue 12/31/13	▶																								
Task 1: Project Administration	Wed 6/1/11	Tue 12/31/13	▶																								
Task 2: Labor Compliance Program	Wed 6/1/11	Fri 11/30/12	▶																								
Task 3: Reporting	Mon 12/31/12	Tue 12/31/13	▶																								
Quarterly Reports	Mon 12/31/12	Tue 12/31/13	▶																								
Final Report	Tue 12/31/13	Tue 12/31/13	▶ ◆ 12/3																								
(b) Row (b) Land / Right-of-Way Acquisition	Wed 12/31/08	Wed 12/31/08	▶																								
MOU from Pomona Valley Protective Association	Wed 12/31/08	Wed 12/31/08	▶																								
(c) Row (c) Planning / Design / Engineering / Environmental Documentation	Mon 1/3/05	Mon 8/1/11	▶																								
Task 4: Assessment and Evaluation	Fri 4/1/05	Wed 3/1/06	▶																								
Feasibility Study of Imported Water	Fri 4/1/05	Fri 4/1/05	▶																								
Mitigation Alternatives to Rising Groundwater Study	Wed 3/1/06	Wed 3/1/06	▶																								
Task 5: Final Design	Sun 12/31/06	Mon 8/1/11	▶																								
95% (Pre-final) Design	Sun 12/31/06	Sun 12/31/06	▶																								
100% (Final) Design	Mon 8/1/11	Mon 8/1/11	▶ ◆ 8/1																								
Task 6: Environmental Documentation (N/A)	Mon 1/3/05	Thu 12/29/05	▶																								
Notice of Preparation of Study/Initial Study	Mon 1/3/05	Mon 1/3/05	▶																								
EIR	Thu 12/29/05	Thu 12/29/05	▶																								
Task 7: Permitting (N/A)	Wed 12/31/08	Wed 12/31/08	▶																								
MWD ROW Permit	Wed 12/31/08	Wed 12/31/08	▶																								
(d) Row (d) Construction / Implementation	Mon 8/1/11	Fri 11/30/12	▶																								
Task 8: Construction Contracting	Mon 8/1/11	Mon 10/3/11	▶																								
Notice Request for Bids	Mon 8/1/11	Mon 8/1/11	▶ ◆ 8/1																								
Bid-opening	Thu 9/1/11	Thu 9/1/11	▶ ◆ 9/1																								
Complete Contract Award and Notice to Proceed	Mon 10/3/11	Mon 10/3/11	▶ ◆ 10/3																								
Task 9: Construction	Mon 10/3/11	Fri 11/30/12	▶																								
(e) Row (e) Environmental Compliance/ Mitigation/ Enhancement (N/A)	Sun 11/30/14	Sun 11/30/14	▶																								
(f) Row (f) Construction Administration	Mon 8/1/11	Fri 11/30/12	▶																								
(g) Row (g) Other	Mon 8/1/11	Mon 8/1/11	▶																								
Project Monitoring Plan	Mon 8/1/11	Mon 8/1/11	▶ ◆ 8/1																								

Project: San Antonio Spreading Grounds Improvements
Date: January 2011

Task Progress Summary External Tasks Deadline

Split Milestone Project Summary External Milestone

Task Name	Start	Finish	2009				2010				2011				2012				2013											
			Q3	Q4	Q1	Q2	Q3	Q4	Q1	Q2	Q3	Q4	Q1	Q2	Q3	Q4	Q1	Q2	Q3	Q4										
Grant Notification	Wed 6/1/11	Wed 6/1/11												◆ 6/1																
Grant Contract	Wed 6/1/11	Wed 6/1/11												◆ 6/1																
(a) Row (a) Direct Project Administration	Wed 6/1/11	Sat 3/1/14																												
Task 1: Project Administration	Wed 6/1/11	Sat 3/1/14																												
MOU with LACFCD	Mon 1/2/12	Mon 1/2/12																◆ 1/2												
Task 2: Labor Compliance Program	Wed 6/1/11	Tue 12/31/13																												
Task 3: Reporting	Wed 6/1/11	Fri 2/28/14																												
Quarterly Reports	Wed 6/1/11	Sun 12/1/13																												
Final Report	Fri 2/28/14	Fri 2/28/14																												
(b) Row (b) Land / Right-of-Way Acquisition (N/A)	Sat 1/1/00	Sat 1/1/00																												
(c) Row (c) Planning / Design / Engineering / Environmental Documentation	Fri 1/1/99	Thu 3/1/12																												
Task 4: Assessment and Evaluation	Fri 1/1/99	Fri 10/1/99																												
Feasibility Study	Fri 10/1/99	Fri 10/1/99																												
Task 5: Final Design	Fri 3/19/10	Sat 12/31/11																												
Preliminary Design (PDR through 30%)	Fri 3/19/10	Mon 2/28/11																◆ 2/28												
60% Design	Tue 3/1/11	Sun 7/31/11																												
90% (Pre-final) Design	Mon 8/1/11	Mon 10/31/11																												
100% (Final) Design	Thu 11/3/11	Mon 1/2/12																												
Task 6: Environmental Documentation	Thu 9/16/10	Wed 8/31/11																												
CEQA Mitigated Negative Declaration	Wed 8/31/11	Wed 8/31/11																												
Task 7: Permitting	Mon 10/4/10	Thu 3/1/12																												
Construction Permit	Mon 10/4/10	Thu 3/1/12																												
Other Permits as Needed	Mon 10/4/10	Thu 3/1/12																												
(d) Row (d) Construction / Implementation	Sun 1/1/12	Tue 12/31/13																												
Task 8: Construction Contracting	Sun 1/1/12	Thu 3/15/12																												
Construction Contracting Solicitation	Sun 1/1/12	Thu 3/1/12																												
Notice to Proceed	Thu 3/15/12	Thu 3/15/12																												
Task 9: Construction	Thu 3/15/12	Tue 12/31/13																												
(e) Row (e) Environmental Compliance/ Mitigation/ Enhancement	Thu 3/15/12	Tue 12/31/13																												
(f) Row (f) Construction Administration	Thu 3/15/12	Tue 12/31/13																												
(g) Row (g) Other	Mon 8/1/11	Tue 12/31/13																												
Monitoring Plan	Mon 8/1/11	Mon 8/1/11																												

Project: Leo J Vander Lans Advanced Water Treatment Plant Expansion
Date: January 20110

Task		Progress		Summary		External Tasks		Deadline	
Split		Milestone		Project Summary		External Milestone			

Task Name	Start	Finish	2009		2010				2011				2012				2013				2014				2015										
			Q3	Q4	Q1	Q2	Q3	Q4	Q1	Q2	Q3	Q4	Q1	Q2	Q3	Q4	Q1	Q2	Q3	Q4	Q1	Q2	Q3	Q4	Q1	Q2	Q3	Q4							
Grant Notification	Wed 6/1/11	Wed 6/1/11										◆	6/1																						
Grant Contract	Wed 6/1/11	Wed 6/1/11										◆	6/1																						
(a) Row (a) Direct Project Administration	Sat 1/1/00	Wed 12/31/14	-----▶																																
Task 1: Administration	Wed 6/1/11	Wed 12/31/14												=====▶																					
Task 2: Labor Compliance Program (N/A)	Sat 1/1/00	Sat 1/1/00											-----▶																						
Task 3: Reporting	Tue 3/1/11	Fri 8/1/14											-----▶																						
Quarterly Progress Report	Tue 3/1/11	Tue 12/31/13											=====▶																						
Final Report Upon Completion of Project	Fri 8/1/14	Fri 8/1/14																									◆	8/1							
(b) Row (b) Land Purchase / Easement (N/A)	Sat 1/1/00	Sat 1/1/00											-----▶																						
(c) Row (c) Planning / Design / Engineering / Environmental Documentation	Sat 1/1/00	Mon 12/29/14	-----▶																																
Task 4: Assessment and Evaluation	Wed 8/30/00	Mon 12/29/14											=====▶																						
Los Angeles County Drainage Area (LACDA) Water Conservation and Supply Santa Fe- Whittier Narrows Dams Feasibility Study	Wed 8/30/00	Wed 8/30/00											-----▶																						
Updated Los Angeles County Drainage Area (LACDA) Water Conservation and Supply Santa Fe- Whittier Narrows Dams Feasibility Study	Sat 1/1/11	Tue 12/31/13											=====▶																						
Task 5: Final Design (N/A)	Sat 1/1/00	Sat 1/1/00											-----▶																						
Task 6: Environmental Documentation	Tue 3/1/11	Mon 12/30/13											-----▶																						
Environmental Assessment	Tue 12/31/13	Tue 12/31/13																								◆	12/31								
CEQA: Mitigated Negative Declaration	Tue 12/31/13	Tue 12/31/13																							◆	12/31									
NEPA: Notice of Intent, Finding of No Significant Impact, Record Of Decision	Tue 12/31/13	Tue 12/31/13																							◆	12/31									
Task 7: Permitting (N/A)	Sat 1/1/00	Sat 1/1/00											-----▶																						
(d) Row (d) Construction / Implementation (N/A)	Sat 1/1/00	Sat 1/1/00	-----▶																																
Task 8: Construction Contracting	Sat 1/1/00	Sat 1/1/00											-----▶																						
Task 9: Construction	Sat 1/1/00	Sat 1/1/00											-----▶																						
Row (e) Environmental Compliance/ Mitigation/ Enhancement (N/A)	Sat 1/1/00	Sat 1/1/00											-----▶																						
(f) Row (f) Construction Administration (N/A)	Sat 1/1/00	Sat 1/1/00											-----▶																						
(g) Row (g) Other (N/A)	Sun 12/1/13	Sun 12/1/13																							◆	12/1									
Monitoring Plan	Sun 12/1/13	Sun 12/1/13																							◆	12/1									

Project: Whittier Narrows Conservation Pool Project Date: January 2011	Task Progress Split Milestone	Summary External Tasks Deadline	Project Summary External Milestone
---	------------------------------------	-----------------------------------	-------------------------------------

Task Name	Start	Finish	2009		2010				2011				2012				2013				2014							
			Q3	Q4	Q1	Q2	Q3	Q4	Q1	Q2	Q3	Q4	Q1	Q2	Q3	Q4	Q1	Q2	Q3	Q4	Q1	Q2						
Grant Notification	Wed 6/1/11	Wed 6/1/11											◆ 6/1															
Grant Contract	Wed 6/1/11	Wed 6/1/11											◆ 6/1															
(a) Row (a) Direct Project Administration	Sun 1/1/12	Sat 3/1/14																										
Task 1: Project Administration	Sat 3/1/14	Sat 3/1/14																										◆ 3/1
MOU with LACFCD	Sun 1/1/12	Sun 1/1/12																										◆ 1/1
Task 2: Labor Compliance Program	Wed 6/1/11	Sun 12/1/13																										
Task 3: Reporting	Wed 6/1/11	Sat 3/1/14																										
Quarterly Reports	Wed 6/1/11	Sat 3/1/14																										
Annual Reports	Wed 6/1/11	Sat 3/1/14																										
Final Report	Sat 3/1/14	Sat 3/1/14																										◆ 3/1
(b) Row (b) Land / Right-of-Way Acquisition (N/A)	Sat 1/1/00	Sat 1/1/00																										
(c) Row (c) Planning / Design / Engineering / Environmental Documentation	Fri 12/1/06	Wed 12/1/10																										
Task 4: Assessment and Evaluation	Fri 12/1/06	Wed 12/1/10																										
West Basin 2006 Water Conservation Master Plan	Fri 12/1/06	Fri 12/1/06																										
West Basin Water Conservation Master Plan	Wed 12/1/10	Wed 12/1/10																										◆ 12/1
Task 5: Final Design (N/A)	Sat 1/1/00	Sat 1/1/00																										
Task 6: Environmental Documentation (N/A)	Sat 1/1/00	Sat 1/1/00																										
Task 7: Permitting (N/A)	Sat 1/1/00	Sat 1/1/00																										
(d) Row (d) Construction / Implementation	Fri 9/30/11	Sun 12/1/13																										
Task 8: Construction Contracting	Fri 9/30/11	Thu 12/1/11																										
Contractor Procurement Process	Fri 9/30/11	Tue 11/1/11																										
Contractor Procurement Award	Tue 11/1/11	Tue 11/1/11																										
Complete Contractor Award and Begin Program	Tue 11/1/11	Thu 12/1/11																										
Task 9: Construction	Thu 12/1/11	Sun 12/1/13																										
(e) Row (e) Environmental Compliance/ Mitigation/ Enhancement (N/A)	Sat 1/1/00	Sat 1/1/00																										
(f) Row (f) Construction Administration	Thu 12/1/11	Sun 12/1/13																										
(g) Row (g) Other	Thu 12/1/11	Thu 12/1/11																										
Monitoring Plan	Thu 12/1/11	Thu 12/1/11																										

Project: Water and Energy Efficiency in the School and Hotel/Motel Sectors
Date: January 2011

Task Progress Summary External Tasks Deadline
Split Milestone Project Summary External Milestone